

MB911 CPGF 3.5" HDD Mobile Rack

<2.> LCD SCREEN functions and settings

When power is turned on, the LCD screen displays as below (a) :

- HDD mode: SLAVE (default setting)
- Surrounding temperature if at 30.6°C
- Press the "▲" or "▼" button, the LCD displays to the different modes accordingly:

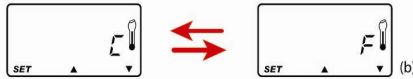
Temperature Detection Setting H.U.T.R. Display



3-1 Temperature Detection and °C/°F Settings

3-1-1. From Main Display, press "SET" button to enter Temperature °C/°F Setting Mode and display the following (b) :

- Press "▲" button or "▼" button to switch the °C → °F → °C.
- Press "SET" button to confirm your choice.



NOTE:
If LCD screen does not return to Main Display, stop operation for 15 seconds, the LCD will then automatically return to the Main Display and the original temperature detection setting will be cancelled.

3-1-2. After confirming the °C/°F mode, enter Temperature detection Setting mode. The LCD screen flashes the following (c) :

- Default setting: 50.0°C (122.0°F).

3-1-3. If setting temperature at 55.0°C (131.0°F), the LCD will display the following (d) :

- Press hold the "SET" button for more than 3 seconds, and the alarm buzzer will sound "BEEP" twice as confirmed choice. If sound "BEEP" is less than twice, it is not a confirmed choice.



Reset to default setting:
Switch off the device, hold the "SET" button and press "▲" or "▼" button, while turning on the power. Wait until you hear the "BEEP" signal, and the device is now reset to its default setting.

3-2 H.U.T.R. Display

To enter the H.U.T.R. mode. The time record is displayed as below (e) :



3-4 Temperature Overheat Detection Setting

Original detection set at 50.0°C (122.0°F), if temperature detected overheats the original setting. Screen using °C will display the following (g) :

- HDD access and Fan signals are displayed.
- Temperature and alarm buzzer signals will continuously flash.



3-3 HDD Access Display

If HDD is reading or writing, HDD access signal displays as below (f) :



3-5 Fan Fail Alarm

If the fan fails or is disconnected, the LCD displays the following (h) :

- HDD access signal is displayed.
- Fan and alarm buzzer signals will continuously flash

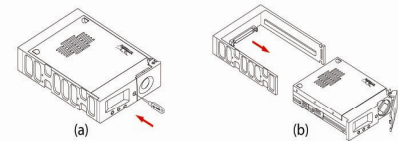


NOTE:
Buzzer and alarm symbol are disable by pressing any buttons located at the front panel. However, the disabling of the alarm buzzer does not mean that the failures has been occupied. You will need to occupy the failures prior to having the unit operate at a normal status.

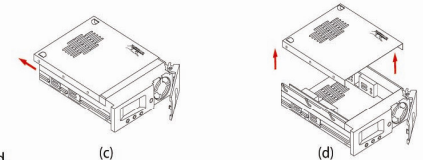
<3.> Installing the device

3-1 Hard drive Installation

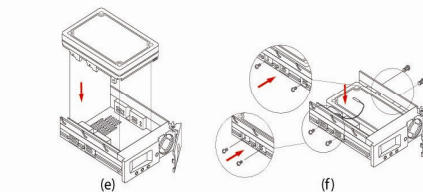
3-1-1 Use the miniature key provided and insert into the key hold to eject handle. (a)



3-1-2 Pull the handle outwards to remove the carrier away from the U-frame. (b)



3-1-3 Slide the top cover backwards to release. (c)

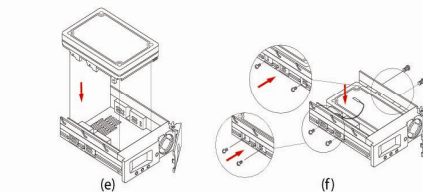


3-1-4 Remove the top cover by lifting it upwards. (d)



3-1-5 Position the HDD into carrier body. (e)

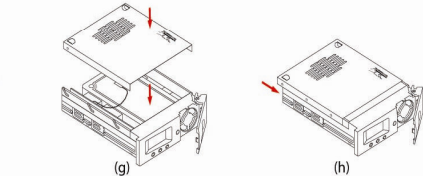
3-1-6 Secure the HDD using the four 6#-32 screws provided, then place the temperature sensor onto the top of the HDD right above the spinning motor. (f)



3-1-7 Slide the top cover back onto the carrier body. (g)

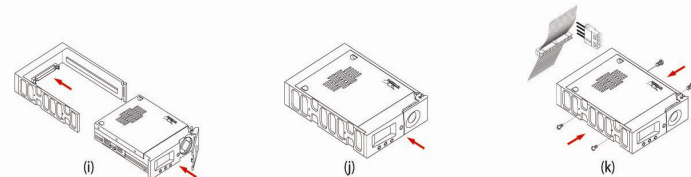
3-1-8 Slide the top cover forward to secure. (h)

3-1-9 Slide the carrier body back into the U-frame until the handle slowly shuts toward the front panel. (i)



3-1-10 Push carrier body further into U-frame until the pull handle is fully shut and inserted. (j)

3-1-11 Install the module into a 5.25" half-height expansion bay. Insert the DC power connector and the SCSI cable connector of the user's chassis to the 68 pin connector located at the back-plane of the U-frame. Then, fully secure the module to the chassis by using the four M3x6 screws provided. (k)



NOTE: To avoid getting high-voltage shock, please change the flash slides after powering off the removable enclosure device.